

New York State Building Standards and Codes Application for Appeal of Determinations Concerning the
Rand Hall Fine Arts Library at Cornell University
Petitioner: Jonathan Ochshorn

Exhibit 4

Photos of “Code Analysis Drawings” for the Rand Hall Fine Arts Library LSP 100–103, dated February 14, 2018, prepared by STV Architects, 225 Park Avenue South, New York, NY 10003. I have reformatted my photos of this drawing set and excluded some tables from LSP-100, in order to fit on 8-1/2” x 11” sheets.

OCCUPANT LOAD CALCULATION

OCCUPANT LOAD CALCULATION				
Room Number	Name	Area	Area Per Occupant	Occupancy
0 CELLAR				
000EA	EXIST ELEV 1	56 SF		
B00J	SECURITY	73 SF	300 SF	1
B00SA	EXIT STAIR A	47 SF	300 SF	1
B00SA	EXIT STAIR A	55 SF	100 SF	1
B00UA	EXIST. EMR	60 SF	300 SF	1
B01	VEST	61 SF	300 SF	1
B02	EXIST. MECH RM.	103 SF	300 SF	1
		454 SF		6

1ST FL

100C	EXIST. HALL	278 SF	100 SF	3
100EA	EXIST ELEV	67 SF		
100J	VEST	13 SF	100 SF	1
100JA	JC	17 SF	300 SF	1
100SA	STAIR A	47 SF	100 SF	1
100SC	EXIT STAIR B	55 SF	100 SF	1
100TA	EXIST. TOIL.	46 SF	100 SF	1
100TB	EXIST. TOIL.	53 SF	100 SF	1
100UA	RAND ELEC.	116 SF	300 SF	1
100UB	EXIST. MECH. RM.	96 SF	300 SF	1
100UD	MILSTEIN ELEC.	53 SF	300 SF	1
100UE	ELEV. RM.	52 SF	300 SF	1
100UF	MECH. RM.	410 SF	300 SF	2
101	EXIST. FACULTY	168 SF	100 SF	2
101A	EXIST. OFF.	106 SF	100 SF	2
102	EXIST. OFF.	68 SF	100 SF	1
105	MECH. RM.	652 SF	300 SF	3
109	WD. SHOP	1417 SF	50 SF	29
110	STAFF	84 SF	100 SF	1
115	MTL. SHOP	507 SF	50 SF	11
117	CLOSET	9 SF	100 SF	1
119	CLOSET	10 SF	100 SF	1
120	WORK AREA	3484 SF	50 SF	70
121	CNC	243 SF	50 SF	5
123	CNC	220 SF	50 SF	5
		8272 SF		146

2ND FL

200	READING	4928 SF	50 SF	99
200C	CORR.	130 SF	100 SF	2
200EA	EXIST ELEV	67 SF		
200EB	ELEV 2	52 SF		
200JA	CUST.	20 SF	100 SF	1
200SA	EXIT STAIR A	167 SF	100 SF	2
200SC	EXIT STAIR B	44 SF	100 SF	1
200SD	EXIT STAIR D	34 SF	100 SF	1
200SD	STAIR D	26 SF	100 SF	1
200SE	STAIR E	25 SF	100 SF	1
200TA	EXIST. M. TOIL.	172 SF	100 SF	2
200TB	EXIST. W. TOIL.	214 SF	100 SF	3
201	STACKS	2502 SF	100 SF	26
204	STAFF WORK.	370 SF	100 SF	4
		8751 SF		143

3RD FL

300CA	CORR.	125 SF	100 SF	2
300EA	EXIST ELEV	69 SF		
300EB	ELEV 2	52 SF		
300SA	EXIT STAIR A	162 SF	100 SF	2
300SB	STAIR B	76 SF	100 SF	1
300SD	STAIR D	27 SF	100 SF	1
300SD	STAIR D	67 SF	100 SF	1
300UB	EXIST MILSTEIN MECH RM.	464 SF	300 SF	2
301	STACKS	2295 SF	100 SF	23
304	SEMINAR RM.	476 SF	50 SF	10
306	LIBR. OFF.	138 SF	100 SF	2
308	SM. OFF.	174 SF	100 SF	2
		4124 SF		46

4TH FL

400EB	ELEV 2	52 SF	100 SF	1
400SA	EXIT STAIR A	162 SF	100 SF	2
400SB	STAIR B	74 SF	100 SF	1
400SB	STAIR B	57 SF	100 SF	1
400SD	STAIR D	36 SF	100 SF	1
401	STACKS	2951 SF	100 SF	30
		3331 SF		36

5 ROOF

500CA	CORR.	103 SF	100 SF	2
500EB	ELEV 2	54 SF	100 SF	1
500SA	STAIR A	163 SF	100 SF	2
500SB	STAIR B	121 SF	100 SF	2
500TA	W. TOIL.	110 SF	100 SF	2
500TB	M. TOIL.	48 SF	100 SF	1
500UA	ELEC	3 SF		
500UB	FIRE ALARM	3 SF		
500UC	WATER	2 SF		
501	ART GALLERY	911 SF	7 SF	131
		1519 SF		141

Grand total

26451 SF 518

TOILET FACILITIES CALCULATION

PROPOSED TOILET FACILITIES CALCULATIONS (TABLE 403.1)- 2016 NYS PLUMBING CODE												
FLOOR	NO OF OCCUPANTS	MALE W.C.		FEMALE W.C.		MALE LAV.		FEMALE LAV.		DRINKING FOUNTAIN		SS
		REQD.	PVD.	REQD.	PVD.	REQD.	PVD.	REQD.	PVD.	REQD.	PVD.	
RAND HALL												
1-SHOP	145	1	1	1	1	1	1	1	1			
2-LIBRARY	143											
3-LIBRARY	46	1	5	2	4	1	2	1	2	2	6	2
4-LIBRARY	36											
5-ROOF TERRACE	93	1	1	2	2	1	1	1	1			
*MILSTEIN												
B1	637	2.55	5	4.9	5	1.59	4	1.59	4			
1	300	2	0	2	0	1	0	1	0			
TOTAL		7.55	12	11.9	12	5.59	8	5.59	8			

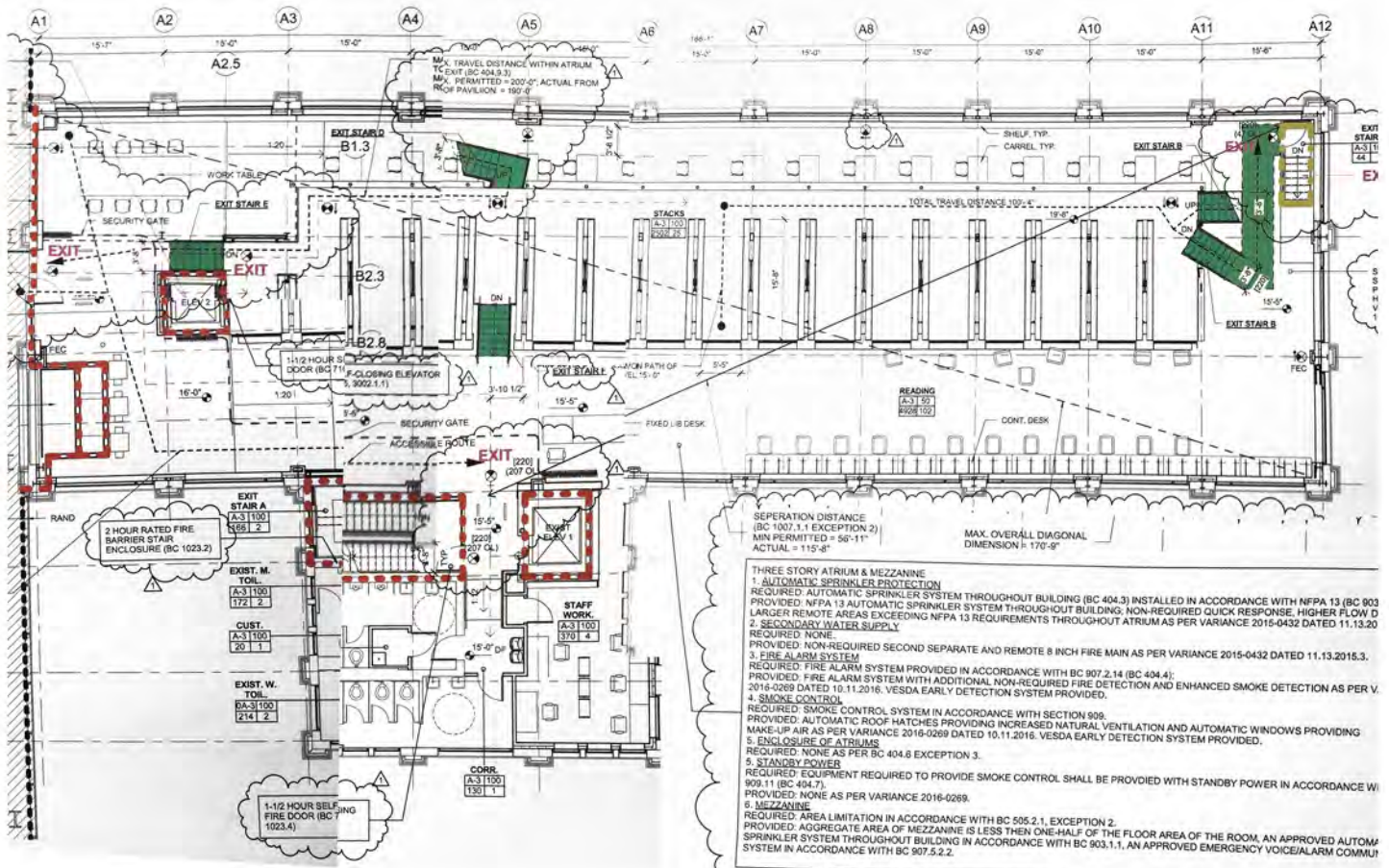
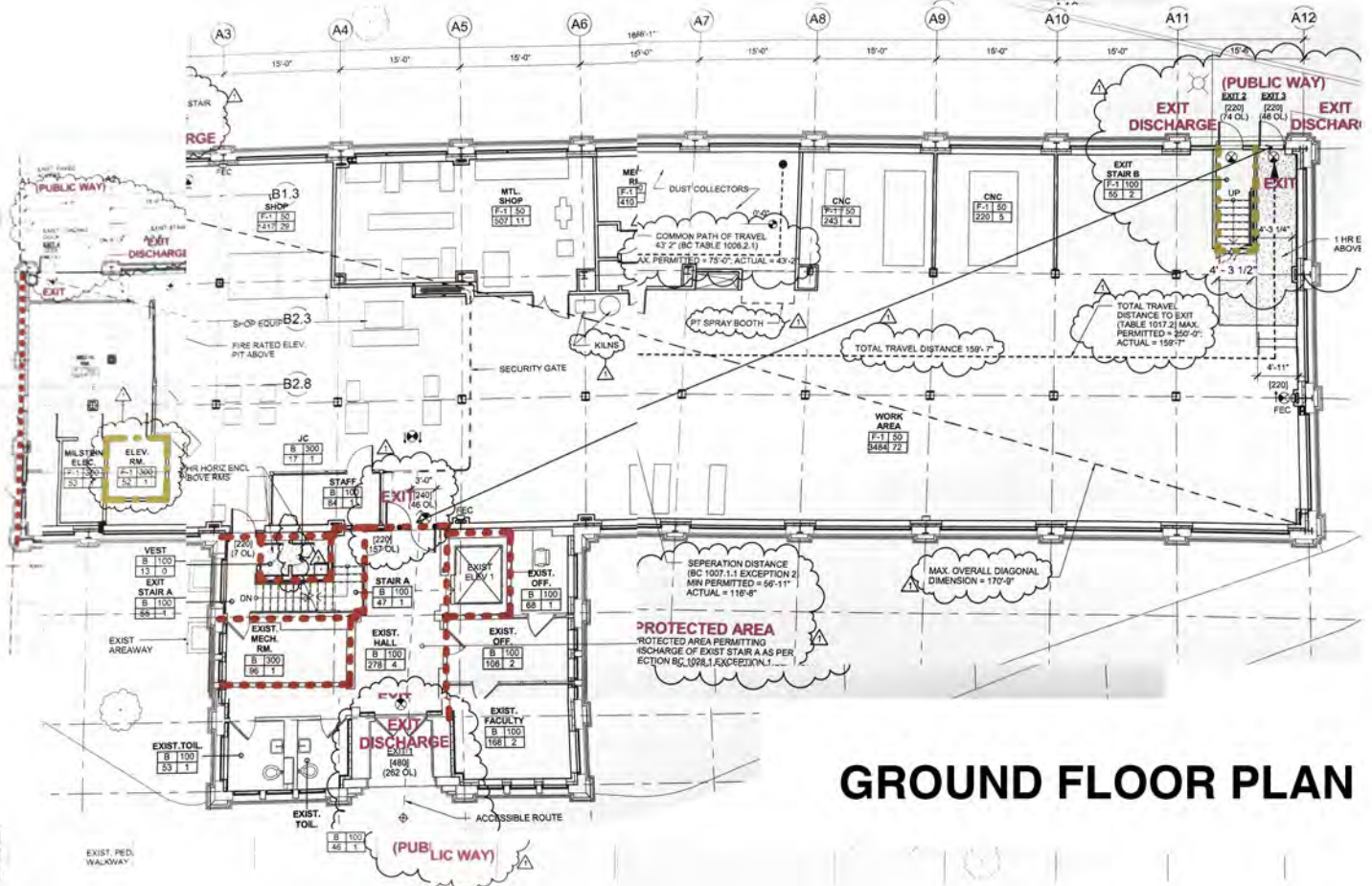
* NOTE: MILSTEIN POPULATION, REQUIRED AND PROVIDED TOILET FACILITIES ARE TAKEN FROM MILSTEIN CONSTRUCTION DOCUMENTS PROVIDED BY OWNER.

ARCHITECT:



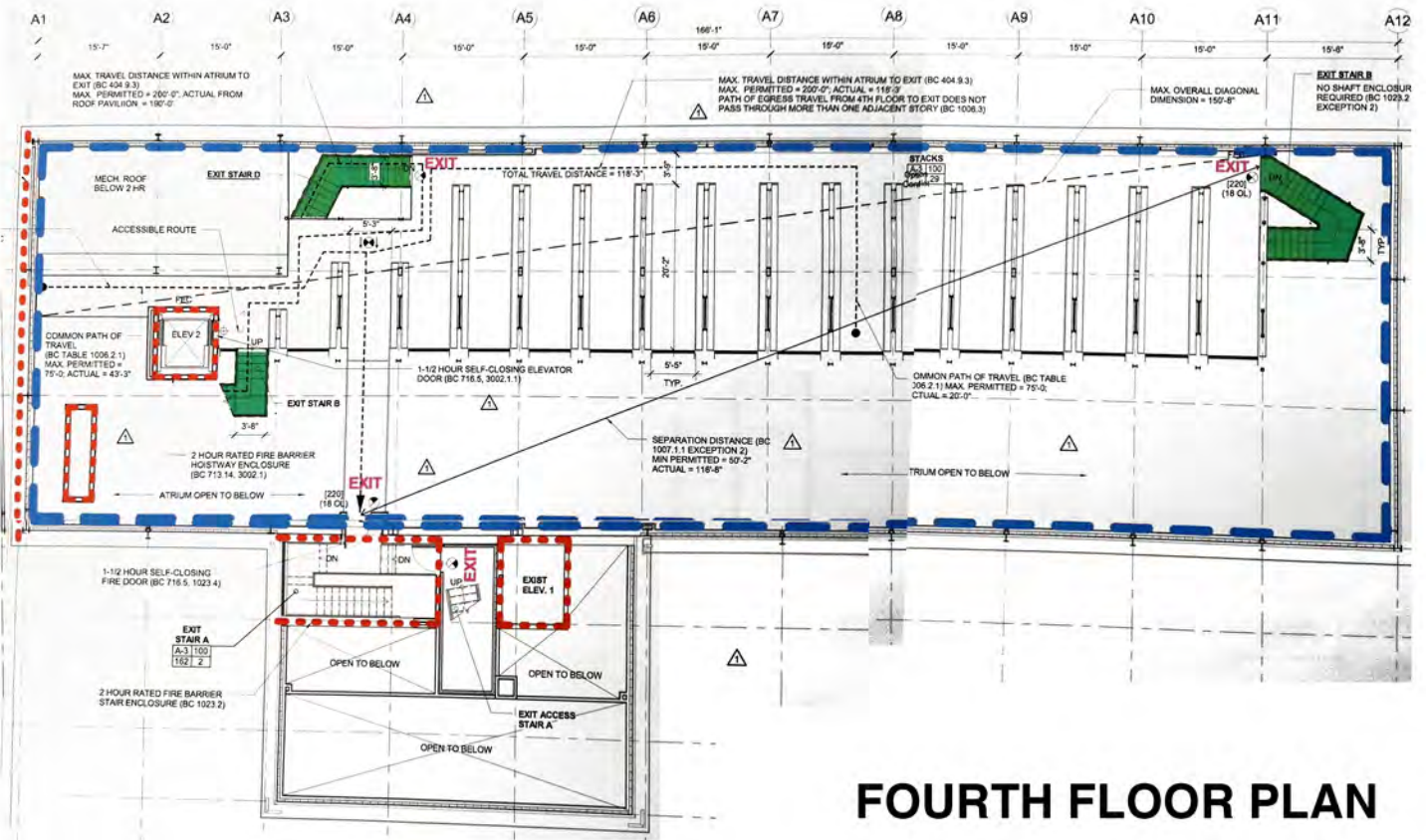
225 Park Avenue South
New York, New York 10003
(212) 777-4400 fax:(212) 529-5237

LSP-100

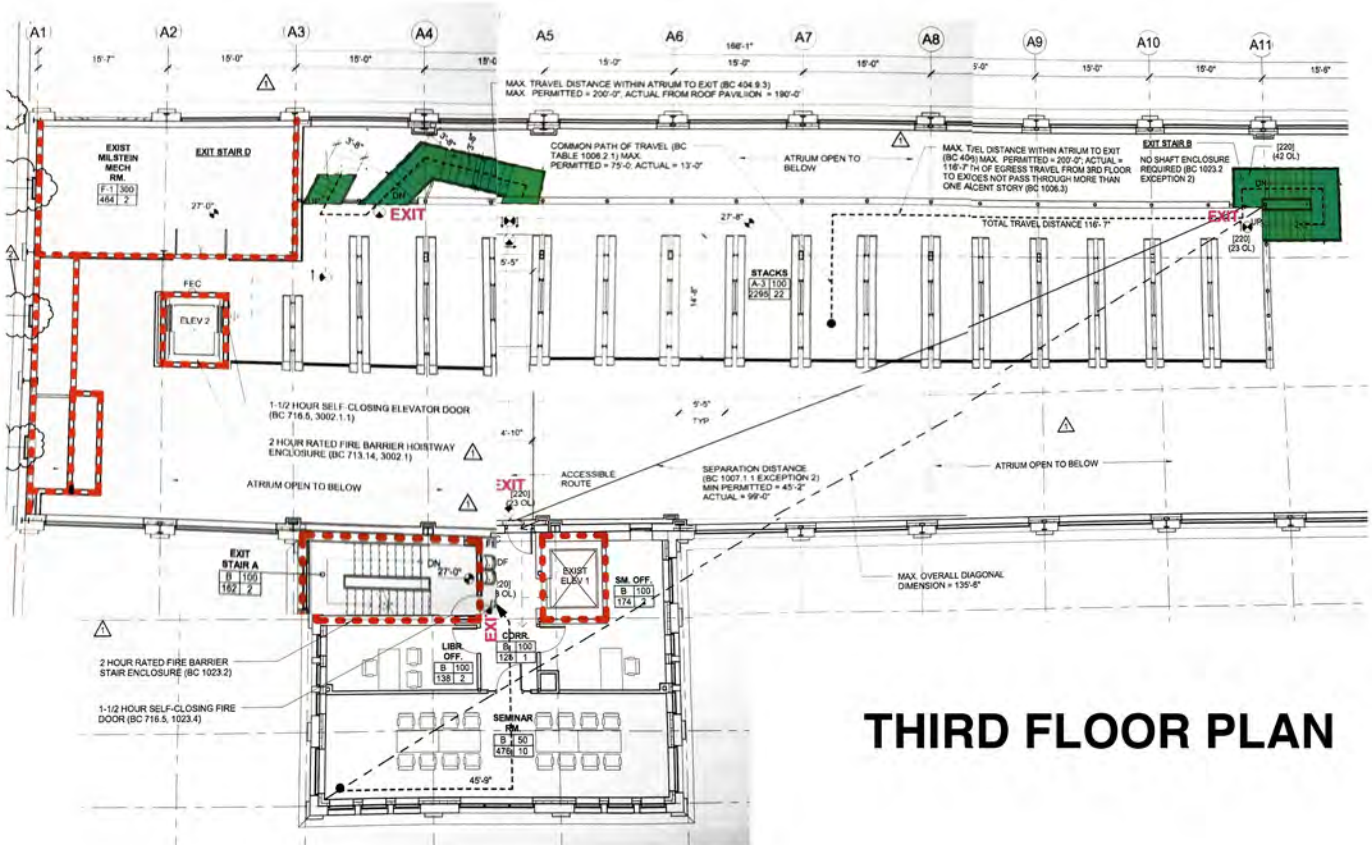


SECOND FLOOR PLAN

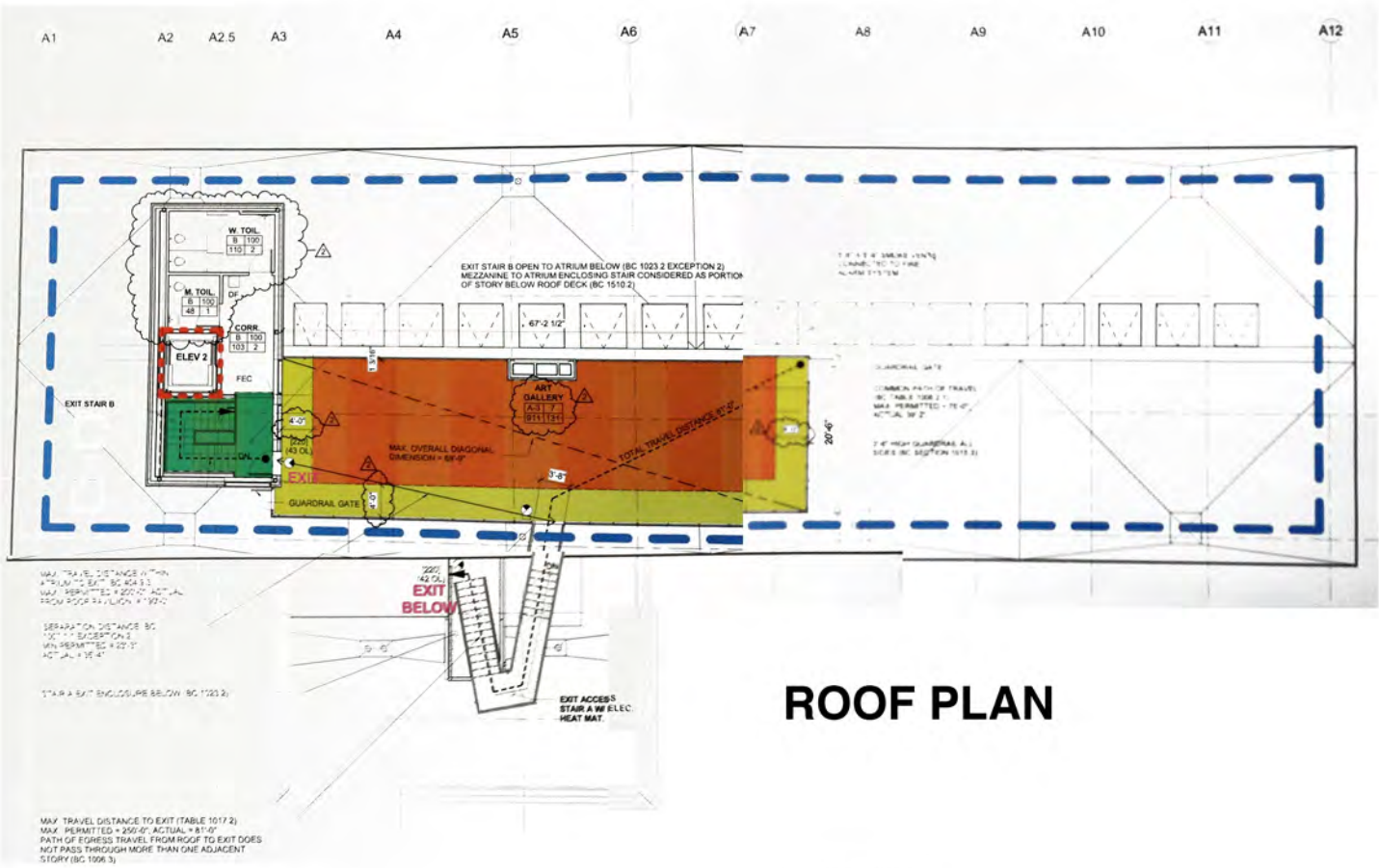
LSP-101



FOURTH FLOOR PLAN

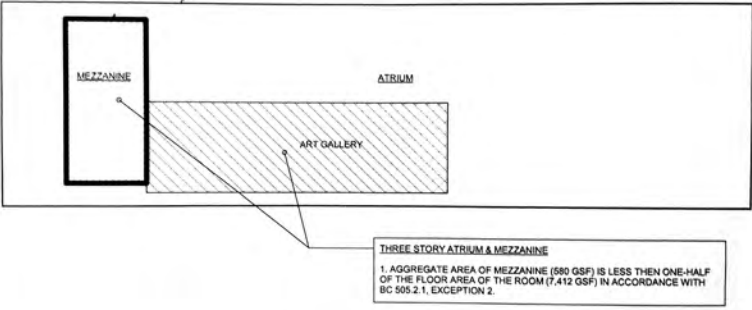


THIRD FLOOR PLAN



ROOF PLAN

MEZZANINE AREA = 580 GSF
 ATRIUM BOUNDARY AREA = 7,412 GSF
 (50% = 3,706 GSF)



MEZZANINE DIAGRAM